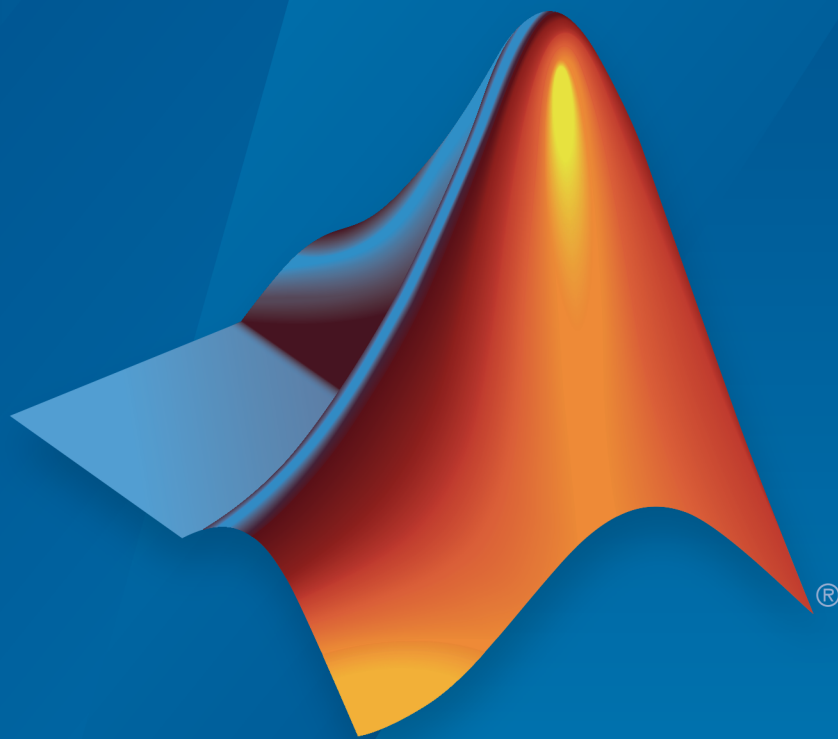


MATLAB[®] Report Generator[™] Release Notes



MATLAB[®]

How to Contact MathWorks



Latest news: www.mathworks.com
Sales and services: www.mathworks.com/sales_and_services
User community: www.mathworks.com/matlabcentral
Technical support: www.mathworks.com/support/contact_us



Phone: 508-647-7000



The MathWorks, Inc.
3 Apple Hill Drive
Natick, MA 01760-2098

MATLAB[®] Report Generator[™] Release Notes

© COPYRIGHT 2002–2015 by The MathWorks, Inc.

The software described in this document is furnished under a license agreement. The software may be used or copied only under the terms of the license agreement. No part of this manual may be photocopied or reproduced in any form without prior written consent from The MathWorks, Inc.

FEDERAL ACQUISITION: This provision applies to all acquisitions of the Program and Documentation by, for, or through the federal government of the United States. By accepting delivery of the Program or Documentation, the government hereby agrees that this software or documentation qualifies as commercial computer software or commercial computer software documentation as such terms are used or defined in FAR 12.212, DFARS Part 227.72, and DFARS 252.227-7014. Accordingly, the terms and conditions of this Agreement and only those rights specified in this Agreement, shall pertain to and govern the use, modification, reproduction, release, performance, display, and disclosure of the Program and Documentation by the federal government (or other entity acquiring for or through the federal government) and shall supersede any conflicting contractual terms or conditions. If this License fails to meet the government's needs or is inconsistent in any respect with federal procurement law, the government agrees to return the Program and Documentation, unused, to The MathWorks, Inc.

Trademarks

MATLAB and Simulink are registered trademarks of The MathWorks, Inc. See www.mathworks.com/trademarks for a list of additional trademarks. Other product or brand names may be trademarks or registered trademarks of their respective holders.

Patents

MathWorks products are protected by one or more U.S. patents. Please see www.mathworks.com/patents for more information.

R2015b

Programmatic interface for adding content to PowerPoint presentations	1-2
DOM API object display options	1-2
DOM API horizontal rule	1-2

R2015a

Support for appending HTML string or file to a Word or PDF report generated by the Document Object Model (DOM) API	2-2
Single-file output option for HTML reports generated by DOM API	2-2
Simplified table formatting with DOM API	2-3
Container for generating high-level HTML elements	2-3
Images and text for DOM report links	2-3

R2014b

Report formatting based on Word and HTML templates . . .	3-2
MATLAB report objects for creating report scripts	3-2
Fast file converter with reduced memory requirements . . .	3-2
Zipped package option for HTML reports	3-3
Fill-in-the-blanks Word and HTML forms for generating reports	3-3
Color settings preferences in MATLAB Comparison Tool . .	3-3

R2014a

OpenOffice support	4-2
------------------------------	-----

R2013b

Bug Fixes

R2013a

Bug Fixes

R2012b

Non-English character set report formats	7-2
---	------------

R2012a

Enhanced Table Components	8-2
Title Page Formatting Enhancements	8-3
Text Component Supports Subscripts and Superscripts . . .	8-3

R2011b

Full Page Image Option for PDF Reports	9-2
Include Legal Notice, Report Creation Date, and Copyright on the Title Page	9-2

R2011a

Improved PDF Pagination	10-2
Export XML Comparison Results to the Workspace	10-2

R2010b

Complete Text Included in Reports	11-2
Linking to MATLAB Commands	11-2
Insert Variable Component Enhancements	11-2
Nest Setup File Component Supports Relative Links	11-2
Enhanced Error Handling Code for Evaluate MATLAB Expression Component	11-2
Transposable Columns for Handle Graphics Summary Table Component	11-2
Additional Date Format for Title Page Component	11-3
Improved XML Comparison Report	11-3

R2010a

Bug Fixes

R2009b

Stylesheets and Stylesheet Data Items Now Alphabetized .	13-2
Improved Images in Word and RTF Reports on Windows Platforms	13-2
Required Products Information for MATLAB/Toolbox Version Number Component	13-2

Adobe Illustrator Image File Format No Longer Supported	13-2
Navigation Controls for XML Comparison Report	13-3

R2009a

No New Features or Changes

R2008b+

Comparison of XML Files	15-2
--------------------------------------	-------------

R2008b

Bug Fixes

R2008a

Bug Fixes

R2007b

**Text Formatting Options for Title Page, Text, and Paragraph
Components 18-2**

R2007a

Bug Fixes

R2006b

Bug Fixes

R2006a+

Bug Fixes

R2006a

User Interface and Performance Enhanced 22-2
XML File Format Changed 22-2

R14SP3

Stylesheets Modify PDF Headers and Footers	23-2
---	-------------

R14SP2+

Stylesheet Editor	24-2
Table Cell Spanning	24-2
Generating Microsoft Word Documents as .doc Files	24-2
Improved Graphical User Interface	24-3

R2015b

Version: 4.2

New Features

Bug Fixes

Programmatic interface for adding content to PowerPoint presentations

You can use the PPT (PowerPoint[®]) API to add generated content to an existing PowerPoint presentation or to create a complete PowerPoint presentation programmatically. Your presentation can capture dynamic information from a MATLAB[®] program without you making manual updates to the presentation. To format the layout and general look of your presentation, use template slide masters, style layouts, and styles. To format specific presentation content, you can use the PPT API format objects and properties.

For examples of PPT API code, see:

- “Update Presentation Content Programmatically”
- “Create a Presentation Programmatically”

DOM API object display options

For Microsoft[®] Word reports, you can use an `mlreportgen.dom.Display` object to specify whether to display an `mlreportgen.dom.Text` object. For HTML reports, you can use a `Display` object to specify the how to display DOM objects such as text, paragraphs, images, list items. For HTML reports, some display options are:

- Display as an inline or block element.
- Display the element similar to a table column, table caption, list element, or a few other elements.
- Suppress the display of the object.

For details, see `mlreportgen.dom.Display`.

DOM API horizontal rule

You can use an `mlreportgen.dom.HorizontalRule` object to specify a horizontal line to visually divide report content.

For details, see `mlreportgen.dom.HorizontalRule`.

R2015a

Version: 4.1

New Features

Bug Fixes

Support for appending HTML string or file to a Word or PDF report generated by the Document Object Model (DOM) API

You can append HTML markup or the contents of a whole HTML file to a programmatic report written with the Document Object Model (DOM) API to:

- Convert an existing HTML report to a Microsoft Word or PDF report.

You can append the HTML markup for a report to a DOM report, which you can then generate in Word or PDF format. For example, you can use a MATLAB `printf` statement to generate an HTML report file, and then append that HTML file to a DOM report to generate a PDF or Word version of the report. Another example is to convert a report generated by Model Advisor from HTML to Word or PDF.

- Add content based on HTML markup.

You can append the HTML code for a report to a DOM report, using the HTML code as a building block in a DOM report that includes other report elements.

Perform these steps to append HTML to a DOM report.

- 1 Ensure that the HTML code complies with HTML standards, such as including beginning and end tags (for example, `<p>` and `</p>`). Consider using a utility such as HTML Tidy.
- 2 In a DOM report, use `addHTML` to append HTML code or `addHTMLFile` to append an HTML file to a document or document part.

For example, this DOM code creates a Word report that displays `Hello World`, based on the HTML code that you append to the report.

```
import mlreportgen.com.*;
d = Document('MyReport', 'docx');
addHTML(d, '<p style="color:blue"><b>Hello World</b></p>');
```

For information about using the `addHTML` or `addHTMLFile` methods, see `mlreportgen.dom.Document.addHTML` or `mlreportgen.dom.Document.addHTMLFile`.

Single-file output option for HTML reports generated by DOM API

To simplify display of an HTML report, you can specify that the DOM API generate the report as a single HTML file that includes the report images.

Specify 'html-file' for the `type` input argument for a `Document` or `DocumentPart` constructor. For details, see the `mlreportgen.dom.Document` reference page.

Simplified table formatting with DOM API

In R2015a, the DOM API includes several enhancements to simplify creating and formatting tables.

- You can use an `mlreportgen.dom.ResizeToFitContents` format object in the `Style` property for `mlreportgen.dom.Table` or `mlreportgen.dom.FormalTable` objects. The `ResizeToFitContents` specifies whether to resize columns to fit the widest content in a column.
- You can specify an `mlreportgen.dom.Height` format object in the `Style` property of an `mlreportgen.dom.TableEntry` object. The height of a row is the tallest height specified for a table entry in that row. If no entries in the row specify a height, then the row height is specified by the `Height` property of the `TableRow` object.
- Table entries can now inherit the border formatting specified in a `TableEntriesStyle` property of `mlreportgen.dom.Table` or `mlreportgen.dom.Table` objects.

Container for generating high-level HTML elements

You can use the `mlreportgen.dom.Container` class to create high-level HTML elements not otherwise supported by the DOM API, such as `div`, `section`, or `article`.

You can also use a `Container` object to simulate format inheritance in Word reports.

For details, see `mlreportgen.dom.Container`.

Images and text for DOM report links

You can append text and images to `mlreportgen.dom.ExternalLink` and `mlreportgen.dom.InternalLink` objects.

For details, see `mlreportgen.dom.ExternalLink.append`.

R2014b

Version: 4.0

New Features

Bug Fixes

Report formatting based on Word and HTML templates

You can use Microsoft Word or HTML templates for reports that you create using:

- The Report Explorer. For details, see [Generate a Report Using a Template](#).
- MATLAB report objects. See [Document Object Model](#).

MATLAB report objects for creating report scripts

You can use the DOM (Document Object Model) API to create MATLAB programs to generate reports. The DOM API provides a set of objects for creating text, paragraphs, tables, images, lists, and other kinds of report content. When you create a report program, you can:

- Produce Microsoft Word, HTML, and PDF output using the same code.
- Specify formatting for report objects, such as color and bold for text objects.
- Use format objects (for example, `Bold` and `FontFamily`) to format report objects.
- Add MATLAB data directly to report objects (for example, a `char` array to a `Text` object).
- Use formatting and fixed content that is defined in a Word or HTML template.
- Create form-based reports that contain fixed and generated content.
- Modularize a report into parts for generation of reports that have repetitive elements of the same format.

For information about how to create report programs, see [Document Object Model](#).

Fast file converter with reduced memory requirements

Generate template-driven reports much faster than in previous releases, without using Java memory.

To take advantage of these performance advantages, use one of these **File format** report options:

- HTML (from template)
- PDF (from template)
- Word (from template)

For details, see Report Generation Using Templates.

Zipped package option for HTML reports

You can use a zip file to package reports that use an HTML template. Zip file packaging compresses and consolidates the files. You can also package the HTML files as unzipped files or as both zipped and unzipped files.

Fill-in-the-blanks Word and HTML forms for generating reports

You can use the DOM (Document Object Model) report objects in a MATLAB program along with Word and HTML fill-in-the-blanks templates that contain fixed and holes to include generated content. The report program uses report objects to generate the variable information. See Form-Based Reporting.

Color settings preferences in MATLAB Comparison Tool

You can now change and save your diff color preferences for the MATLAB Comparison Tool. You can apply your color preferences when comparing text files, MAT-files, variables, zip files or folders.

R2014a

Version: 3.16

New Features

Bug Fixes

OpenOffice support

On Linux[®] and Macintosh platforms, the report output appears in Apache OpenOffice if you:

- Set **File format** to either Word Document (RTF) or Rich Text Format
- Enable **View report generation**

In the MATLAB Report Generator™ Preferences, the **View command** preference default now enables viewing the report in OpenOffice for Linux and Macintosh platforms.

For details, see Report Output Format and Stylesheet.

R2013b

Version: 3.15

Bug Fixes

R2013a

Version: 3.14

Bug Fixes

R2012b

Version: 3.13

Bug Fixes

Non-English character set report formats

The MATLAB Report Generator provides basic PDF font support for:

- English
- Japanese
- Korean
- Russian (Cyrillic)

You can use the language font map to:

- Add or modify specifications for PDF font usage for supported non-English languages.
- Create PDF font support for a non-supported language.
- Change the default English fonts, if you do not specify a stylesheet.

The language font map specifications indicate what font to use on a specific platform (for example, Windows[®]) for basic report elements such as body text. For details, see PDF Fonts for Non-English Platforms.

R2012a

Version: 3.12

New Features

Bug Fixes

Compatibility Considerations

Enhanced Table Components

You can use the following new components to create and format a table:

- Table
- Table Column Specification
- Table Header
- Table Body
- Table Footer
- Table Row
- Table Entry

Formatting options that the Table component and its child components support include:

- Text color and alignment
- Row background colors
- Inclusion of images
- Inclusion of hyperlinks
- Table cells spanning columns and rows

You can conditionally control the content or format of a table.

For more information, see [Table Formatting Components](#).

Compatibility Considerations

Releases earlier than R2012a included a different Table component. Starting in R2012a, that component is now called the Array-Based Table component.

The Array-Based Table component produces the same output, and has the same properties, as it did when it was called the Table component. The Array-Based Table component converts a rectangular array into a table and inserts the table into the report.

If a report that was created in a previous release already includes a Table component, the output is the same as in previous releases. To change property values for that component in R2012a or later, use the Array-Based Table dialog box.

Title Page Formatting Enhancements

For PDF and HTML reports, you can use the Stylesheet Editor to position title page elements (for example, title, copyright, and images) anywhere on the front or reverse side of the title page in any order. You can specify the size, color, weight, and slant of text elements.

For details, see [Modify Title Page Properties](#).

Text Component Supports Subscripts and Superscripts

You can include a subscript or superscript in a paragraph, using a Text component.

R2011b

Version: 3.11

New Features

Bug Fixes

Full Page Image Option for PDF Reports

To display full-page images in PDF reports, set the **Paper orientation** property to the new **Full page image (PDF only)** option. The following components provide this new option:

- Axes Snapshot
- Figure Snapshot

The Image component has a **Full page image (PDF only)** check box, which provides the same functionality as the **Full page image (PDF only)** property option.

Include Legal Notice, Report Creation Date, and Copyright on the Title Page

The Title Page component includes a new **Display legal notice on title page** check box. Use this option to include the legal notice, report creation date, and copyright information on the title page of reports that use PDF or Microsoft Word format.

R2011a

Version: 3.10

New Features

Bug Fixes

Improved PDF Pagination

Reports generated using PDF output format produce better pagination, including:

- Section titles are on the same page as the associated text (now section titles cannot appear as orphans at the bottom of a page).
- Captions are on the same page as their associated images.

Export XML Comparison Results to the Workspace

You can now export XML comparison results to the MATLAB base workspace. You can use the results data for tasks such as further analysis or incorporating into different reports.

For details, see [Export Results to the Workspace](#) in the MATLAB Report Generator User's Guide.

R2010b

Version: 3.9

New Features

Bug Fixes

Complete Text Included in Reports

Any component that displays text in reports now displays the whole text, without any truncation.

Linking to MATLAB Commands

Using the Link component, in a report you can now include a link that executes a MATLAB command.

Insert Variable Component Enhancements

The Insert Variable component includes several new options for specifying the content that the component displays and the table layout that the component uses.

Nest Setup File Component Supports Relative Links

The Nest Setup File component includes a new **Link to external report is relative** option, which makes the link to the nested report a relative link. This feature facilitates including a report on a Web site.

Enhanced Error Handling Code for Evaluate MATLAB Expression Component

The Evaluate MATLAB Expression component includes enhanced error handling code that you can easily customize (for example, the error handling code can stop report generation, with or without displaying an exception). The default error handling code now supports MATLAB class exception handling, using the `evalException` variable instead of `lastError`.

Transposable Columns for Handle Graphics Summary Table Component

For the Handle Graphics Summary Table component, use the new **Transpose table** check box to change the summary table rows into columns in the generated report. Specifying this option puts the property names in the first column and the values in the other columns.

Additional Date Format for Title Page Component

The Title Page component includes an additional date format for the **Include report creation date** field: yyyy/mm/dd.

Improved XML Comparison Report

Reports for comparisons of XML files have a new faster user interface, with changed parameters displayed in a separate panel for easier review. The enhanced report now has color highlighting for new and changed items.

For details, see [Explore the XML Comparison Report](#) in the MATLAB Report Generator User's Guide.

R2010a

Version: 3.8

Bug Fixes

R2009b

Version: 3.7

New Features

Bug Fixes

Compatibility Considerations

Stylesheets and Stylesheet Data Items Now Alphabetized

When you create or modify a stylesheet, the Report Explorer **Options** pane now alphabetically sorts the stylesheets and the data items in each stylesheet category.

Compatibility Considerations

The order in which a stylesheet or data item appears in a list may have changed from the order used in previous releases.

Improved Images in Word and RTF Reports on Windows Platforms

To provide better graphics quality in reports using the Word document format or RTF (Rich Text format) on Windows platforms, the default format for Handle Graphics® images is now Windows metafile format. The default had been black and white TIFF.

You can control the image format using the MATLAB preferences or the MATLAB Report Generator preferences, or from snapshot components such as the Axes Snapshot component.

Compatibility Considerations

To change the image format back to the previous default of black and white TIFF, change the preferences.

Required Products Information for MATLAB/Toolbox Version Number Component

The MATLAB/Toolbox Version Number component now supports options to display information based on whether a Simulink model or Stateflow chart requires a MathWorks™ product. This feature does not apply to reports on MATLAB or toolbox code.

Adobe Illustrator Image File Format No Longer Supported

Compatibility Considerations

The **Image file format** options for the Axes Snapshot and the Figure Snapshot components no longer include Adobe® Illustrator. If you wish to integrate a MATLAB Report Generator image into Adobe Illustrator, specify an image file format supported by Adobe Illustrator, such as PDF, and then open the image file in Adobe Illustrator.

Navigation Controls for XML Comparison Report

The XML comparison report has new navigation controls to step through differences in the report. You can use the toolbar buttons or the **XML** menu to move to the next or previous group of changes.

For details, see *Explore the XML Comparison Report in the MATLAB Report Generator User's Guide*.

R2009a

Version: 3.6

No New Features or Changes

R2008b+

Version: 3.5

New Features

Bug Fixes

Comparison of XML Files

New comparison report for pairs of XML files.

For details, see [Comparing XML Files](#) in the MATLAB Report Generator documentation.

See also the following new example: `mlxml_testplan`.

R2008b

Version: 3.4

Bug Fixes

R2008a

Version: 3.3

Bug Fixes

R2007b

Version: 3.2.1

New Features

Bug Fixes

Text Formatting Options for Title Page, Text, and Paragraph Components

This release includes new text formatting options for the Title Page, Text, and Paragraph components.

For more information, see the MATLAB Report Generator documentation.

R2007a

Version: 3.2

Bug Fixes

R2006b

Version: 3.1

Bug Fixes

R2006a+

Version: 3.0.1

Bug Fixes

R2006a

Version: 3.0

New Features

Bug Fixes

Compatibility Considerations

User Interface and Performance Enhanced

The Report Explorer interface has a number of enhancements. The **View** menu has commands to increase and decrease font size and to show the message window if it is not displayed.

MATLAB Report Generator performance has improved. Reports are often generated more rapidly and with less chance of running out of memory.

XML File Format Changed

The format of XML files has changed in V3.0 (R2006a).

Compatibility Considerations

In V3.0 (R2006a), Report Explorer and the `rptconvert` command can convert XML files produced by the report generation process in V2.3.1 (R14SP3) and previous versions. However, in V2.3.1 (R14SP3) and previous versions, Report Explorer and the `rptconvert` command cannot convert XML files produced by the report generation process in V3.0 (R2006a).

R14SP3

Version: 2.3.1

New Features

Bug Fixes

Stylesheets Modify PDF Headers and Footers

This release adds support for modifying the content of headers and footers in PDF reports. This feature is implemented using stylesheet cells and cell groups. A *cell group* contains one or more stylesheet cells. A *stylesheet cell* is a set of values that determine the content of a particular portion of the header or footer for a page.

Two cell groups, **Header Content** and **Footer Content**, are available for PDF reports. You can use templates to specify XML code that defines the content for a header or footer.

R14SP2+

Version: 2.3

New Features

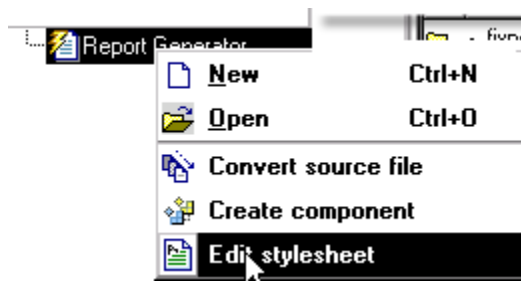
Bug Fixes

Stylesheet Editor

You can use the Stylesheet Editor to customize the formatting of your HTML, PDF, and Word documents. For example, you can specify fonts, paper layout, table presentation, as well as other characteristics of your final report.

Customizing reports by editing stylesheets gives you the flexibility to create reports that conform to corporate style guidelines and requirements.

To open the Stylesheet Editor, right-click **Report Generator** in the Outline pane of the Report Explorer and then click **Edit Stylesheet** on the shortcut menu, as shown:



For more information about using the Stylesheet Editor, see [Create Custom Stylesheets](#) in the MATLAB Report Generator documentation.

Table Cell Spanning

You can create advanced table layouts for property tables. The advanced layouts include cells that span multiple rows or columns.

Generating Microsoft Word Documents as .doc Files

You can generate reports that are saved as Microsoft Word documents with the `.doc` extension. You can also convert XML source files that are generated by the report generation process to `.doc` files.

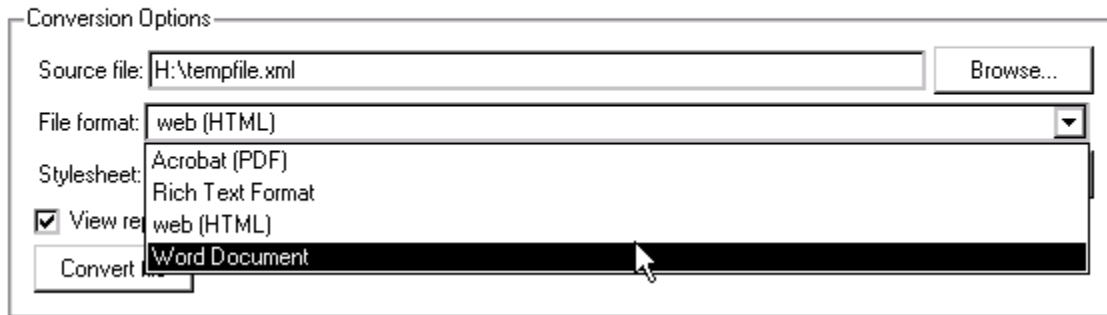
The reports you create are easier to distribute via e-mail, to share with others, and to manage.

You must have Microsoft Word software installed to use this feature, and you must be running the MATLAB Report Generator software on a Microsoft Windows system.

To use this feature select **Word Document** from the **Stylesheet** drop-down list in the Convert Source File dialog box, as shown:

Convert Source File

The Source File Converter transforms DocBook XML source files created by the Report Generator into a formatted document, such as HTML, RTF, or PDF.



Improved Graphical User Interface

This version of the MATLAB Report Generator software has the following changes and improvements to the graphical user interface:

- The File Converter has a **Source File** drop-down list. Click **Browse** to navigate to a folder to select a source file. The default folder is the current folder.
- In the File Converter, you can select a stylesheet from the drop-down list and click **Edit** to open the Stylesheet Editor.
- An improved mechanism detects and displays errors that occur when you attempt to add a component that makes the style hierarchy invalid. Users of earlier versions may notice that warnings are now issued for components that had no problems in earlier versions. In this release, warning messages contain instructions about how to fix the problem.
- The **Figure Screen Capture** component has been improved to capture window decorations such as menus, title bars, and toolbars.

